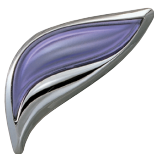


SHARP

MX-M1204 / MX-M1054 / MX-M904
Digital Multifunctional System



HIGH PERFORMANCE
SRA3 BLACK & WHITE
PRODUCTION MFP



We understand productivity /**This is Why** we're proud to put our name to these versatile high performance MFPs

Downtime is expensive /This is Why reliability comes as standard

Letting document production equipment stand idle is expensive and wasteful. Deadlines pass by, opportunities are missed and frustrations rise. Maximum throughput is not just desirable, it's crucial.

Which is why, if you run a commercial print business or a corporate reprographics department, you need our MX-M1204, MX-M1054 or MX-M904.

Engineered for maximum, high-volume productivity and capable of sustained print and copy speeds of 90, 105 and 120 pages per minute, they are our most powerful and resilient production MFPs ever.

Rugged durability

Consistently feeding paper at speeds of up to 120 ppm is a technical challenge. But maintaining that performance on a range of media through an array of inline finishing options - for hours at a time, day after day - takes real engineering talent. And that's what you'll find here.

The Large Capacity Trays feature our advanced triple air feed technology, for example, for smoother transportation of SRA3 and glossy stock. And in the event of a rare mis-feed, our multi-feed sensors will detect and diagnose the problem, helping the operator to clear it without delay.

The maximum paper capacity is a useful 13,500 sheets, the toner and the paper can be replenished without interrupting the print run, and other features such as Auto Tray Switching and long life developer reduce manual intervention still further.

Sustained productivity has never been easier.



A rapid return on your investment

With machines this rugged you'll want to take on as much work as you can find. So it's worth taking the time to consider some of the new capabilities they'll bring to your team.

For a start, you can print and copy on to any size of stock between A5R and SRA3. And you can run coated and uncoated media, right the way up to 300gsm: directly from the Large Capacity Trays.

Scanning is equally impressive. The Advanced Document Feeder, which comes as standard, can process as many as 200 originals per minute - in full colour - to JPEG, TIFF, XPS, PDF, PDF/A, encrypted PDF or compact PDF formats.

Scans can be sent directly to email recipients, FTP, a network server, your desktop, a USB memory stick or the MFP's internal hard drive. There's even a handy 'Scan to Me' function, which gives you one click scanning directly to your own email address, too.

FULL COLOUR
NETWORK SCANNING

1 terabyte of storage

Every machine in the range comes with a massive 1TB of storage. Use it to store your scanned documents so that they can be shared, reused and repurposed whenever you need them, or simply held in a secure archive.

You can also add a Disk Mirroring Kit which lets you recover data in the event of a hard disk failure.



Productivity depends on ease of use /This is Why we've automated every major function

The MX-M1204, MX-M1054, MX-M904 have the quality, power and resilience to take on the toughest workloads. But that's just the starting point.

Take a look at the finishing options. Between them, they can produce a huge range of fully finished, customer-ready documents as part of an effortless, single-step process.

There's a full range of multi-position stapling and hole punching options complete with offset stacking to keep your finished documents neatly separated.

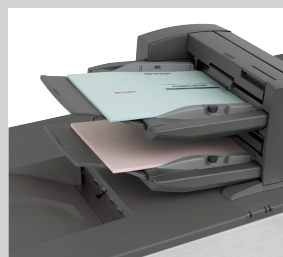
Plus, we've included an adjustable Curl Correction Unit to ensure flat, easily manageable output across a range of media, and a folding unit for making a variety of documents with 'Z', 'C', 'Accordion', 'Double' and 'Half' folds.

You can create a variety of different booklets, too. Depending on which options you specify, you can produce stapled, saddle-stitched and square fold booklets, neatly trimmed for a professional finish, plus a range of punched, multi-page documents with industry standard bindings.

A Post-Process Inserter makes it easy to insert pre-printed covers, inserts and other pages into your print run, and you can add High Capacity Stackers and Paper Carts for stacking and transporting up to 10,000 sheets at a time, in readiness for offline finishing and distribution.

It all adds up to a rugged, high performance system with the versatility to tackle any challenge, any day.

EXTENSIVE FINISHING CAPABILITIES



Instant productivity

If all this sounds rather complicated, relax. We've made it possible to control every major feature - and view all system status alerts - from a large 10.1" colour touch screen control panel which tilts for easy viewing.

But unlike other touch screen systems, ours incorporates finger-swipe technology. So all you have to do is log on to your personalised home screen and then tap, flick or slide your finger for effortless control.

You can even add full internet access. So now your colleagues can browse for and print web content without the need for a PC. What's more, you can add Sharp OSA® to connect to the 'Cloud' and run Software as a Service (SaaS) applications developed by Sharp's Technology Partners.

Plus, with Sharp OSA® installed you can use the Sharp OSA Network Scanner Tool to streamline complex scanning and printing jobs by automatically applying your preferred options and settings.

Thoughtful design

We've paid close attention to operator convenience. An optional retractable QWERTY keyboard makes it easy to add data to your scans.

We added a highly visible status indicator, which displays a red light when operator attention is required. What's more, every important area - including consumables and the paper transport mechanism - is accessible from the front of the MFP for faster, easier intervention.

And we've included our innovative Remote Access Control Panel which lets you view and operate the front panel display from your PC, allowing you to take control, change settings, fix problems and provide ad hoc instruction, without ever leaving your desk.



TILTABLE CONTROL
PANEL WITH
RETRACTABLE
KEYBOARD OPTION



We understand your concern for the environment **/This is Why** our MFPs consume fewer natural resources

You might think that machines this powerful must consume a lot of energy and be expensive to run. But the truth is that we've gone to great lengths to make them as environmentally friendly as possible.

For a start, we've used biomass plastic in their construction and we use biomass toner for printing and copying: materials which have a far lower environmental impact than conventional plastic and toner.

A combination of rapid warm up times, an efficient fusing unit, a new low temperature toner formulation, and energy efficient LED lights in the scanner all help to reduce power consumption and running costs.

They also come with an Eco Scan feature, which stops the fuser from being needlessly heated when the MFP is being used only for scanning, but automatically warms the heater for copying.

On/off times can be set according to a schedule of your choosing and an Enhanced Auto Power Shut Off feature lets users fine-tune this by specifying particular dates.

Used together or in isolation, each of these features help make the Energy Star-certified MX-M1204, MX-M1054 and MX-M904 some of the most environmentally friendly production class MFPs you can buy.



Hard to beat security

These MFPs incorporate some of the industry's toughest commercially available security features, including data encryption. Each model has password-controlled access for robust user authentication. Plus, they come with a useful Data Initialisation feature for erasing data from your MFP when the time comes to replace it.

A secure network interface, SSL, IPsec, port-based network protection, and IP / MAC address filtering defend against the most determined attacks.

We guard against accidents, too, with features such as password-protected PDFs, a Hidden Pattern Print feature which can reveal a watermark (e.g. 'CONFIDENTIAL NOT FOR COPY') and Confidential PIN Printing which requires the user to be present at the MFP before the print run can start.

Other security features include the encryption and secure erasure of data on the hard disk, either automatically or on demand.

We can prevent the unauthorized copying, scanning, faxing and filing of confidential documents, too with our Document Control Function*. This adds copy-prevention data to a document when it is first copied or printed. If the data is subsequently detected the MFP simply cancels the job or print a blank page.

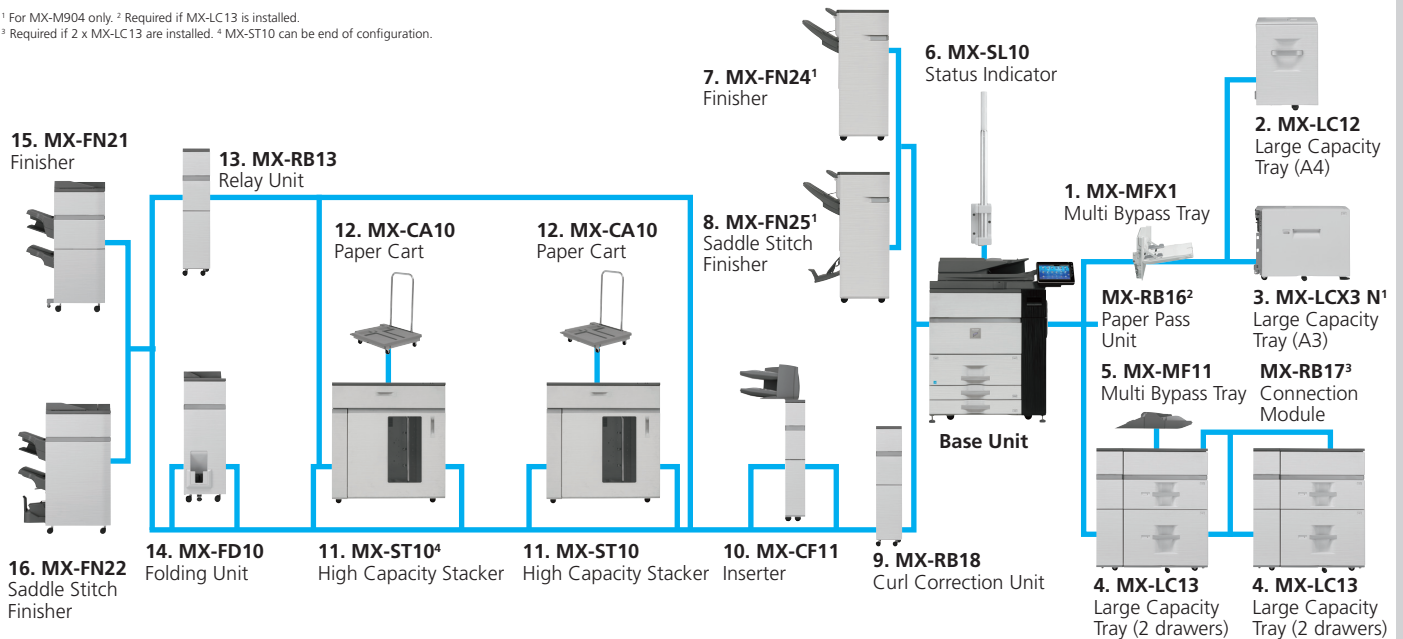


MULTI-LEVEL
SECURITY

*Requires Data Security Kit option

OPTIONS

¹ For MX-M904 only. ² Required if MX-LC13 is installed.
³ Required if 2 x MX-LC13 are installed. ⁴ MX-ST10 can be end of configuration.



Base Unit

MX-KB13 Keyboard

1. MX-MFX1 Multi Bypass Tray

A5R – A3W, 100 sheets (80g/m²)
 (for main machine)
 Cannot be installed with MX-LC13.



Keyboard

2. MX-LC12 Large Capacity Tray (A4)

A4 – B5, 3,500 sheets (80g/m²)
 Requires MX-MFX1. Cannot be installed with MX-LCX3N or MX-LC13.

3. MX-LCX3 N Large Capacity Tray (A3)

A3 – A4R, 3,000 sheets (80g/m²)
 Requires MX-MFX1. Cannot be installed with MX-LC12 or MX-LC13.
 Not available for MX-M1204 & MX-M1054.

MX-RB16 Paper Pass Unit

(between machine and MX-LC13) Must be installed with MX-LC13.

4. MX-LC13 Large Capacity Tray (2 drawers)

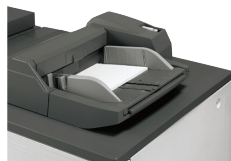
SRA3 – A4R, 2,500 sheets each (80g/m²)
 Requires MX-RB16. Cannot be installed with MX-LC12 or MX-LCX3N.

MX-RB17 Connection Module

Required if 2 x MX-LC13 are installed.

5. MX-MF11 Multi Bypass Tray

(for MX-LC13)
 SRA3 – A5R, 500 sheets (80g/m²)



Multi Bypass Tray

6. MX-SL10 Status Indicator

Finishing

7. MX-FN24 Finisher (3k - 50-sheet staple)

A3-B5R (offset/staple), A3W – A5R (non offset)
 Offset tray: 3,000 sheets*
 Top tray: 250 sheets*
 50-sheet* staple capacity
 (front, rear or 2 point stitching)
 Cannot be installed with MX-FN25.
 Not available for MX-M1204 & MX-M1054.



Finisher

8. MX-FN25 Saddle Stitch Finisher

(2k - 50-sheet staple)
 A3-B5R (offset/staple), A3W – A5R (non offset)
 Offset tray: 2,000 sheets*
 Top tray: 250 sheets*
 50-sheet* staple capacity
 (front, rear or 2 point stitching)
 Saddle stitch tray: 10 sets (11-15 sheets),
 15 sets (6-10 sheets), 30 sets (2-5 sheets)
 Cannot be installed with MX-FN24.
 Not available for MX-M1204 & MX-M1054.



Saddle Stitch Finisher

MX-PNX4A/C/D Punch Module

(for MX-FN24 or MX-FN25)
 A: 2 hole punch, C: 4 hole punch, D: 4 hole wide punch
 Not available for MX-M1204 & MX-M1054.

9. MX-RB18 Curl Correction Unit

Corrects paper curling by putting pressure on the convex/concave curl
 Required if MX-FN21 or MX-FN22 is installed.

10. MX-CF11 Inserter (200-sheet x 2 bin)

SRA3 – A5R, 200 sheets each (80g/m²)
 Requires MX-RB18.



Inserter

11. MX-ST10 High Capacity Stacker

SRA3 - A5R

Paper stacking tray: 5,000 sheets (80g/m²)

Top tray: 250 sheets (80g/m²)

Requires MX-RB18 and either MX-RB13 or MX-FD10 if connecting to MX-FN21/FN22.



Stacker

12. MX-CA10 Paper Cart

Included with MX-ST10.

For easy transport of finished document to another place.

13. MX-RB13 Relay Unit

(between 100-sheet finisher and inserter).

Must be installed if MX-FD10 is not required.

14. MX-FD10 Folding Unit

Folding options include Z, C, accordion, double and half folds. Can only be installed with MX-FN21 or MX-FN22.



Folding Unit

15. MX-FN21 Finisher (4k - 100-sheet staple)

A3 - B5 (offset/staple), SRA3 - A5R (non offset)

Upper tray: 1,500 sheets*

Middle tray: 250 sheets*

Lower tray: 2,500 sheets*

100-sheet* staple capacity

(front, rear or 2 point stitching)

Requires MX-RB18. Cannot be installed with MX-FN22.



Finisher

16. MX-FN22 Saddle Stitch Finisher

(4k - 100-sheet staple)

A3 - B5 (offset/staple), SRA3 - A5R (non offset)

Upper tray: 1,500 sheets*

Middle tray: 250 sheets*

Lower tray: 2,500 sheets*

100-sheet* staple capacity

(front, rear or 2 point stitching)

Saddle stitch tray: 5 sets (16-20 sheets),

10 sets (11-15 sheets), 15 sets (6-10 sheets),

25 sets (1-5 sheets). Max 20 sheets per set.

Requires MX-RB18. Cannot be installed with MX-FN21.



Saddle Stitch Finisher

MX-PN13A/C/D Punch Module (for MX-FN21 or MX-FN22)

A: 2 hole punch, C: 2/4 hole punch, D: 4 hole wide punch

MX-TM10 Trimming Module (for MX-FN22)

Up to 20 mm trim width, 1,500 sheets (80 g/m²)

GBC SmartPunch Unit**

Requires MX-RB13 and either MX-FN21 or MX-FN22.

Booklet Maker** (Plockmatic)

Requires MX-FN21.

Faxing

MX-FWX1 Internet-Fax Expansion Kit

MX-FX11 Fax Expansion Kit

Super G3 fax module.

Connectivity

Printing

MX-PF10 Barcode Font Kit

Enables barcode printing.

MX-PUX1 XPS Expansion Kit

Enables XPS printing.

MX-AM10 Web Browsing Expansion Kit

Enables Internet browsing and printing from the control panel.

Scanning

AR-SU1 Stamp Unit

Marks already scanned documents for checking.

MX-EB11 Enhanced Compression Kit

Enables creation of high compression PDFs.

Sharpdesk Licenses

MX-USX1/X5/10/50/A0

1/5/10/50/100-License Kit

Sharp OSA®

MX-AMX1 Application Integration Module

MX-AMX2 Application Communication Module

MX-AMX3 External Account Module

Sharp OSA Network Scanner Tool Licenses

MX-UN01A/05A/10A/50A/1HA (Requires MX-AMX2)

1/5/10/50/100-License Kit

Security

MX-FR38U Data Security Kit (non CC version)

MX-EB15 Mirroring Kit

Second hard drive enables data backup of files stored on HDD.

* A4 or smaller, 80 g/m². ** Available at a later date.

CONFIGURATION EXAMPLES

MX-M904

- A4, A3 and A3W paper handling
- A5R – A3W and 300 g/m² via bypass tray
- 3,100-sheet paper capacity
- 3,250-sheet finisher
- 50-sheet stapling
- 2 or 4 hole punching



MX-M904

- A4, A3 and A3W paper handling
- A5R – A3W and 300 g/m² via bypass tray
- 6,100-sheet paper capacity
- 2,250-sheet finisher
- 50-sheet stapling
- 15-sheet booklets
- 2 or 4 hole punching



MX-M1204/MX-M1054/MX-M904

- A4, A3 and A3W paper handling
- A5R – A3W and 300 g/m² via bypass tray
- 6,600-sheet paper capacity
- 4,000-sheet finisher
- 100-sheet stapling
- 2 or 4 hole punching
- Curl Correction

MX-M1204/MX-M1054/MX-M904

- A4, A3 and SRA3 paper handling
- 8,500 paper capacity
- 4,000-sheet finisher
- 100-sheet stapling
- 20-sheet booklets
- Status Indicator
- Inline trimming
- Inserter
- Curl correction





- MX-M1204/MX-M1054/MX-M904**
- A4, A3 and SRA3 paper handling
 - 8,500-sheet paper capacity
 - Status indicator
 - Curl Correction
 - High Capacity Stacker for 5,000 sheets plus cart

MX-M1204/MX-M1054/MX-M904

- A4, A3 and SRA3 paper handling
- 8,500-sheet paper capacity
- 4,000-sheet finisher
- 100-sheet stapling
- 20-sheet booklets
- Status indicator
- Inline trimming
- Inserter
- Curl Correction
- High Capacity Stacker for 5,000 sheets plus cart
- Various folding options



MX-M1204/MX-M1054/MX-M904

- A4, A3 and SRA3 paper handling
- 13,500-sheet paper capacity
- 4,000-sheet finisher

- 100-sheet stapling
- 20-sheet booklets
- Status indicator
- Inline trimming

- Inserter
- Curl Correction
- High Capacity Stackers for 10,000 sheets plus carts
- Various folding options



GENERAL

Engine speed (ppm/cpm) (Max)

| | | |
|----------|-----|----|
| | A4 | A3 |
| MX-M1204 | 120 | 54 |
| MX-M1054 | 105 | 52 |
| MX-M904 | 90 | 47 |

Paper size (Min – Max)

| | |
|--------------|-----------|
| Drawer 1 & 2 | A4 |
| Drawer 3 | A4R - A3W |
| Drawer 4 | A5R - A3W |
| Multi bypass | A5R - A3W |

Paper weight (g/m²)

| | |
|--------------|----------|
| Drawer 1 & 2 | 60 - 105 |
| Drawer 3 & 4 | 60 - 220 |
| Multi bypass | 52 - 300 |

Paper capacity (Std – Max)

| | |
|---------|--------------------------------|
| Sheets | 3,100 – 13,500 |
| Drawers | 4 – 8 (plus multi bypass tray) |

Warm-up time*1 (seconds)

| | |
|--|-------------|
| | 210 or less |
|--|-------------|

Duplex

| | |
|--|-----|
| | Std |
|--|-----|

Memory

| | |
|-------------------------|------|
| Copier/Printer (shared) | 5 GB |
| HDD | 1 TB |

Power requirements

| | |
|--|--|
| | Rated local AC voltage $\pm 10\%$, 50/60 Hz |
|--|--|

Power consumption kW (Max)

| | |
|----------|------|
| MX-M1204 | 2.99 |
| MX-M1054 | 2.99 |
| MX-M904 | 2.76 |

Dimensions (mm) (W x D x H)

| | |
|--|---------------------|
| | 1,084 x 790 x 1,237 |
|--|---------------------|

Weight (kg)

| | |
|--|-----|
| | 295 |
|--|-----|

COPIER

Original paper size (Max)

| | |
|--|----|
| | A3 |
|--|----|

First copy time*2 (seconds)

| | |
|----------|-----|
| MX-M1204 | 3.2 |
| MX-M1054 | 3.2 |
| MX-M904 | 4.0 |

Continuous copies (Max)

| | |
|--|-------|
| | 9,999 |
|--|-------|

Resolution (dpi)

| | |
|--|------------------------|
| | 1200 x 1200, 600 x 600 |
|--|------------------------|

Gradation levels

| | |
|--|-----|
| | 256 |
|--|-----|

Zoom range (%)

| | |
|--|---|
| | 25 – 400 (25 – 200 using DSPF) in 1% increments |
|--|---|

Preset copy ratios

| | |
|--|------------|
| | 10 (5R/5E) |
|--|------------|

COLOUR NETWORK SCANNER

Scan method

| | |
|--|---|
| | Push scan (via operation panel) |
| | Pull scan (TWAIN compliant application) |

Resolution (dpi)

| | |
|-----------|----------------------------------|
| Push scan | 100, 150, 200, 300, 400, 600 |
| Pull scan | 75, 100, 150, 200, 300, 400, 600 |
| | 50 - 9,600 via user setting |

File formats

| | |
|--|--|
| | XPS*4, PDF, Encrypted PDF, Compact PDF*5, PDF/A-1b, JPEG (colour only), TIFF |
|--|--|

Scan destinations

| | |
|--|---|
| | Scan to e-mail, desktop, FTP server, network folder (SMB), USB memory, fax*6, i-fax*7 |
|--|---|

Scanner utilities

| | |
|--|---|
| | Sharp OSA Network Scanner Tool, Sharpdesk |
|--|---|

NETWORK PRINTER

Resolution (dpi)

| | |
|--|------------------------|
| | 1200 x 1200, 600 x 600 |
|--|------------------------|

Interface

| | |
|--|--|
| | USB2.0, 10Base-T / 100Base-TX / 1000Base-T |
|--|--|

Supported OS

| | |
|--|--|
| | Windows® XP, Windows Server® 2003, Windows Vista®, Windows Server® 2008, Windows Server® 2008 R2, Windows® 7 Mac OS X 10.4.11, 10.5 - 10.5.8, 10.6 - 10.6.8, 10.7 - 10.7.4 |
|--|--|

Network protocols

| | |
|--|--|
| | TCP/IP (IPv4 & IPv6), IPX/SPX (Netware), EtherTalk (AppleTalk) |
|--|--|

Printing protocols

| | |
|--|---|
| | LPR, Raw TCP (port 9100), POP3 (e-mail printing), HTTP, Novell Printserver application with NDS and Bindery, FTP for downloading print files, EtherTalk printing, IPP |
|--|---|

PDL emulation

| | |
|-----|-----------------------------|
| Std | PCL6, Adobe® PostScript® 3™ |
| Opt | XPS*3 |

Available fonts

| | |
|-----------------------|-----|
| PCL | 80 |
| Adobe® PostScript® 3™ | 136 |

DOCUMENT FILING

Document filing capacity (pages/or files)

| | |
|-----------------------------|-------------------|
| Main folder & Custom Folder | 35,000*8 or 5,000 |
| Quick file folder | 10,000*8 or 1,000 |

Stored jobs

| | |
|--|---------------------------------------|
| | Copy, print, scan, fax transmission*6 |
|--|---------------------------------------|

Storage folders

| | |
|--|--|
| | Quick folder, main folder, custom folder (max.1,000) |
|--|--|

Confidential storage

| | |
|--|---------------------|
| | Password protection |
|--|---------------------|

FAX (requires optional MX-FX11)

Compression method

| | |
|--|----------------|
| | MH/MR/MMR/JBIG |
|--|----------------|

Communication protocol

| | |
|--|----------|
| | Super G3 |
|--|----------|

Transmission time*9 (seconds)

| | |
|--|-------------|
| | Less than 3 |
|--|-------------|

Modem speed (bps)

| | |
|--|--|
| | 33,600 – 2,400 with automatic fallback |
|--|--|

Transmission resolution (dpi)

| | |
|------------|--------------|
| Std | 203.2 x 97.8 |
| Ultra Fine | 406.4 x 391 |

Recording width

| | |
|--|---------|
| | A5 – A3 |
|--|---------|

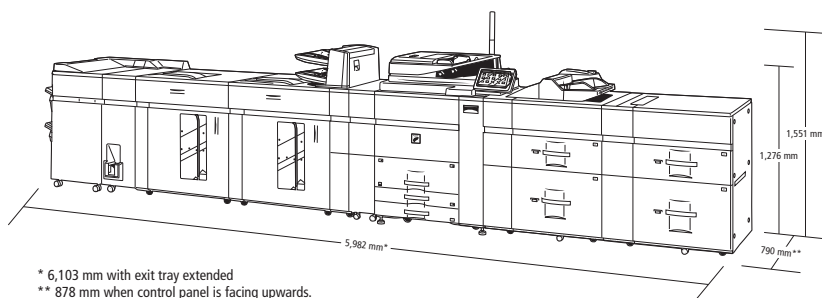
Memory (GB) (Min - Max)

| | |
|--|---|
| | 1 |
|--|---|

Grey scale levels

| | |
|--|-----|
| | 256 |
|--|-----|

EXTERNAL DIMENSIONS



* 6,103 mm with exit tray extended
** 790 mm when control panel is facing upwards.

Design and specifications are subject to change without prior notice. All information was correct at time of print. The ENERGY STAR logo is a certification mark and may only be used to certify specific products that have been determined to meet the ENERGY STAR programme requirements. ENERGY STAR is a US registered mark. Windows, Windows XP, Windows Server and Windows Vista are registered trademarks of Microsoft Corporation. All other company names, product names, and logos are trademarks or registered trademarks of their respective owners. ©Sharp Corporation June 2012 Ref: Brochure MX-M1204/MX-M1054/MX-M904. All trademarks acknowledged. E&OE.



NOTES

- *1 At rated voltage. May vary depending on machine conditions and operating environment.
- *2 Best achieved time based on A4 copy, long-edge feeding from 1st paper drawer, using document glass, when machine is ready. May vary depending on machine conditions and operating environment.
- *3 Requires optional MX-PLUX1.
- *4 To view XPS files on PCs not running Windows Vista, you must have the XPS View application installed.
- *5 Requires optional MX-EB11.

- *6 Requires optional MX-FX11.
- *7 Requires optional MX-FWX1.
- *8 Measured using Sharp's standard chart (A4 with 6% coverage, B/W). The storage capacity will be less for colour pages.
- *9 Based on Sharp's standard chart with approx. 700 characters (A4 portrait) at standard resolution in Super G3 mode, 33,600 bps, JBIG compression.

www.sharp.eu

SHARP

digitron-ist

Generalni distributer za Srbiju, Crnu Goru i BiH
11000 Beograd, Cara Lazara 3
P.C. Milentijana Popovića 11-13; Tel:+381 11 6140 300
E-mail: showroom@digitron-ist.co.rs
Vise informacija na: www.digitron-ist.co.rs