

# SHARP

**MX-7001N/MX-6201N**  
Digital Full Colour Multifunctional Systems



**FAST, VERSATILE COLOUR** MFPS FOR  
HIGH VOLUME DOCUMENT PRODUCTION



SHARP **DOCUMENT SOLUTIONS**

PRINT

COPY

# HIGH PERFORMANCE COLOUR THAT'S BUILT TO LAST

They've arrived. Fast, versatile colour MFPs specifically designed for high volume in-house document production. Capable of up to 50 colour pages per minute - or 70 in black and white - the new MX-7001N and MX-6201N deliver all the quality, performance, and rugged durability you need, in a supremely productive platform.

Features such as the, highly rigid chassis, extra-large paper capacity and twin black toner cartridges are perfect for long runs and continual use, and an impressive range of professional finishing options, document management features, optional Fier® print controller and multi-layer data security options, make them perfect for anyone who's serious about high quality office documents.

Fast? Definitely. Versatile? Absolutely. Reliable? Without a doubt. But, as capable and powerful as these new MFPs most certainly are, you'll find that their thoughtful design and intuitive ease of use means everyone can be more productive right away.



## ADVANCED FUNCTIONS MADE EASY

The MX-7001N/MX-6201N are easy to use for everyone in your office, regardless of experience or ability. A large, easy-to-read 10.4-inch colour touch-screen LCD control panel allows users to easily locate the MX-7001N/MX-6201N's advanced functions. In addition, user-specific customisable "home" screens allow quick access to frequently used functions. And for increased flexibility, Sharp OSA® (Open Systems Architecture) turns the MX-7001N/MX-6201N into an integrated gateway to all your networked business applications.

The MX-7001N/MX-6201N environmentally conscious design complies with both the RoHS\* Directive, which restricts the use of harmful substances, and the new criteria of the Energy Star programme, an international standard for energy-saving products. What's more, the low-consumption toner minimises resource usage.



\* Restriction of the use of certain Hazardous Substances



Home Screen



Tab Copy screen

SCAN

FAX

FILE

## KEY FEATURES

### Exceptional Productivity

- Speedy output of max. 50 ppm in colour (both models) and max. 70 ppm in black and white (MX-7001N)
- Quick first copy out time in both colour and black & white
- Professional job finishing options include booklet making and post-sheet insertion
- Network tandem function doubles output speed by linking two machines
- Standard hard disk and electronic sorting for both colour and black & white
- Large paper capacity of max. 6,600 sheets
- Standard stackless duplex module and 150-sheet Duplex Single Pass Feeder
- High-yield twin black toner cartridges

### Superb Image Quality

- High-quality imaging with new developer and Mycrotoner
- Oil-less toner for brilliant colour output
- Enhanced Sharp Auto Colour Mode and Auto Colour Selection

### Multi-Faceted Colour Performance

- Standard PCL5c/PCL6 and optional PS3 emulation
- Optional Fiery Print Controller for powerful network printing solutions
- Full-colour network scanning with scan to e-mail/FTP server/desktop/network folder (SMB)/USB memory
- Sharpdesk™ for easy, integrated document management on a PC
- Document filing function to instantly reuse saved jobs
- Optional Super G3 fax and Internet fax (in black & white)
- LDAP support for easy browsing of e-mail addresses and fax numbers



### Versatile Operation

- Large 10.4 inch touch-screen colour LCD control panel and customisable user settings
- Variety of advanced copy/print functions
- USB memory direct printing and scanning<sup>\*1</sup>
- Colour stamp function, mixed size original feeding, easy text entry
- Sharp OSA (Open Systems Architecture)<sup>\*2</sup> allows seamless integration with network applications

\*1: Due to a wide variety of USB memory devices, compatibility cannot be guaranteed for all

\*2: Requires optional MX-AMX2 and/or MX-AMX3

### Multi-Layered Security

- Optional Data Security Kit encrypts and erases confidential data
- Secure Sockets Layer (SSL) and encrypted PDF for secure network communications
- Document Control function\* prevents unauthorised copying, scanning, faxing and filing
- Secure embedded network interface with IP/MAC address filtering
- IPv6 and IPsec compatibility ensures high level network security

\* Requires optional Data Security Kit. May not work for certain types of documents and paper

### Environment and User-Friendly

- Newly developed, environmentally conscious supplies
- Industry-leading energy-saving design (less than 1W in night-time standby for fax reception)
- Lead and chromium-free design (RoHS compliant)
- Job Status screen lets you view the list of jobs in progress

# PRINT

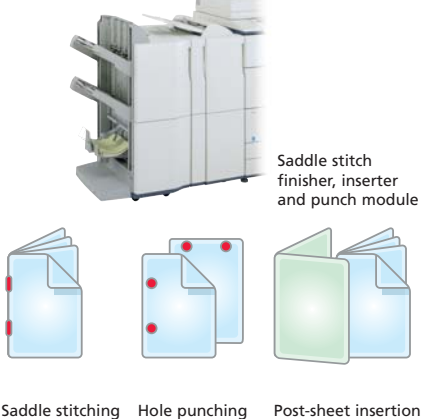
## REMARKABLE COLOUR PRINTING

### USB Memory Direct Printing

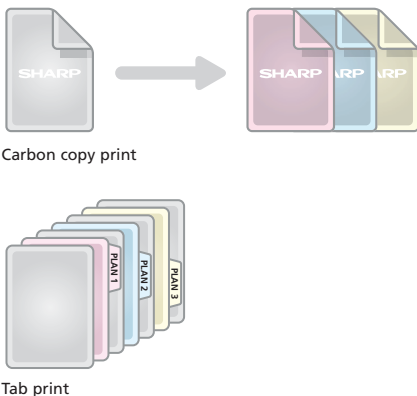


The MX-7001N/MX-6201N tandem printing engine delivers superb, professional-quality documents at fast output speeds of 50 ppm for full colour; black and white output speeds of 70 ppm for the MX-7001N and 62 ppm for the MX-6201N. Quickly print multi-page documents directly from the MX-7001N/MX-6201N's hard disk with the RIP Once/Print Many function. And for advanced office-wide network printing, add the optional Fiere® Print Controller.

### A Variety of Job Finishing Options



### Various Applications



### at a glance...

- **Productive colour printing at 50 ppm** (both models) and **black and white printing at 70 ppm** (MX-7001N) and **62 ppm** (MX-6201N)
- **Stackless duplex module** saves you filing space and paper costs
- **Network printing** supports the most commonly used network operating systems and protocols
- **Optional Fiere Print Controller** provides advanced network printing solutions
- **USB memory direct printing**\*1 — conveniently print data directly from USB memory devices, without accessing a PC
- **PDF/TIFF/JPEG direct print**\*2 - save valuable time by printing PDF, TIFF or JPEG files without using the printer driver, either by calling and printing the file directly from an FTP server, direct printing from a Web page, or direct printing of e-mail attachments
- **Network tandem function** - double the output speed by using two MX-7001N/MX-6201N machines on the same network
- **Proof printing** - check a trial set before printing out a multi-page document in large numbers
- **Supports PCL5c and PCL6** printer language emulations; **PostScript3** is available\*3 for compatibility with more fonts and better graphics handling
- Accepts paper sizes from **A5R to A3 wide**, and weight up to **256 gsm**
- **Full-grip short vertical paper path** minimises paper jams

\*1 Due to a wide variety of USB devices, compatibility cannot be guaranteed for all

\*2: Direct PDF printing requires optional MX-PKX1; may not support all PDF, TIFF or JPEG file formats

\*3: Requires optional MX-PKX1

### Automated Finishing Options

Optional finishing peripherals capable of multi-position stapling, saddle stitch booklet finishing and hole-punching can be added to create sophisticated and professional-looking documents. An inserter is also available for attaching pre-printed covers or inserts up to 256 gsm to your documents.

### Special Applications

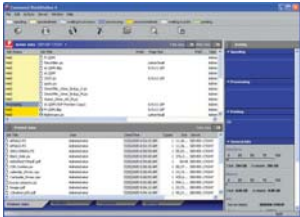
- **Carbon copy print** - print multiple copies of the same data on plain and/or coloured paper fed from different paper trays
- **Form overlay** - store document formatting such as letterheads in colour, eliminating the need for pre-printed paper
- **Tab print** - print directly onto tabs on document separators and insert them into assigned positions
- **Barcode font print compatibility** allows convenient in-house production of barcoded documents (requires optional AR-PF1 Barcode Font Kit)



PRINT

## POWERFUL NETWORK PRINTING SOLUTIONS

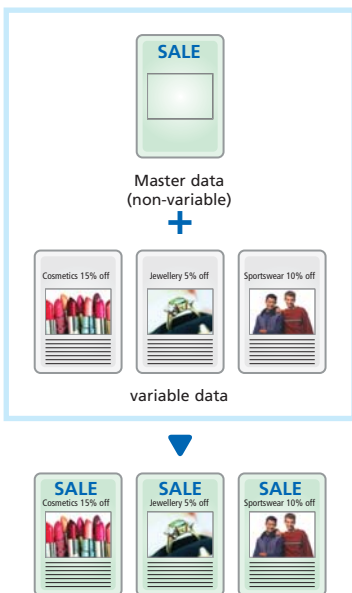
### Command Workstation®



### Fiery® Print Controller

The optional Fiery Print Controller upgrades the MX-7001N/MX-6201N's network printing capabilities and offers versatile tools for remote job and colour management. Ideal for corporate workgroups and businesses that want to efficiently manage in-house printing projects, the controller streamlines document workflow by handling both large-volume colour jobs and routine black & white jobs.

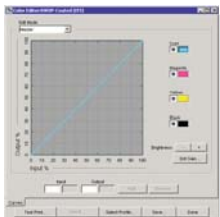
### Fiery FreeForm™



### at a glance...

- **Command Workstation®** enables the centralised management of multiple Fiery print controllers, allowing maximum control of print jobs<sup>\*1</sup>
- **Job Monitor** — track the status of print jobs directly from your PC
- **Fiery FreeForm™** enables fast variable data printing<sup>\*2</sup>. Once a master document is stored on the Fiery print controller, FreeForm saves time by pairing variable or personal data with the master rather than making each document one by one
- **ColorWise®** — a complete colour management system designed to ensure consistent and accurate colour output across multiple platforms and applications
- **ColorWise® ProTools** provide expert users with more advanced calibration and profile management utilities that allow precise control of colour quality
- **RIP-While-Print®** begins processing pages while current pages are printing, increasing throughput on multi-page documents
- **Continuous Print** stores processed pages in memory before printing them out
- **Genuine Adobe® PostScript®3™** support for superior print performance

### ColorWise®



### Optional Fiery software is available for specialised applications:

- **EFI Impose™** efficiently and easily assembles and edits documents before processing or RIP-ing, regardless of the originating application or platform
- **Secure Erase** deletes and overwrites all traces of job data from the hard disk
- **Velocity Balance™** provides centralised management of multiple printers and intelligent distribution of jobs according to the print speed and colour capability of individual printers
- **EFI Color Profiler™ Kit** ensures accurate and consistent colour across multiple printers and monitors
- **Graphic Arts Option™** — a set of tools for graphic arts professionals that provides easy-to-use utilities like Hot Folders for automated, streamlined workflow, Spot-On® to edit CMYK values associated with existing named colours, and Auto Trapping to avoid gaps between two neighbouring colours printed

\*1: Command Workstation® LE for Macintosh

\*2: PostScript only

# COPY

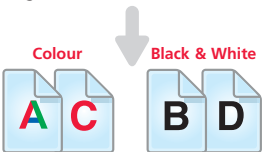
## SUPERB COLOUR COPYING

With an impressive first copy out time and fast continuous copy rate, the MX-7001N/MX-6201N easily handles large-volume jobs. Use the DSPF (Duplex Single Pass Feeder) to quickly scan double-sided documents. The MX-7001N/MX-6201N features a number of advanced copy modes to save time and ensure excellent copy quality.

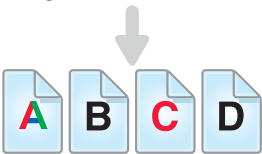
### Auto Colour Selection in Copying



Original with colour and black & white pages



Distinguishes colour and black & white pages



Outputs each page in the appropriate print mode



Twin black toner cartridges



Colour stamp

### at a glance...

- **Fast colour copying at 50 cpm** (both models) and **black and white copying at 70 cpm** (MX-7001N) and **62 cpm** (MX-6201N)
- **Quick first copy out time** — 7.2 sec. in colour (both models); 4.0 sec. in black & white (MX-7001N) and 4.5 sec. (MX-6201N)
- **Convenient 150-sheet DSPF** (Duplex Single Pass Feeder) makes any scan job easy; double-sided documents are scanned in one pass
- **Mixed size original copy mode** automatically distinguishes documents of mixed sizes<sup>\*1</sup> fed through the DSPF and chooses the appropriate paper
- **Enhanced Sharp Auto Colour Mode** clearly reproduces text even with colour or halftone dots in the background
- **Auto Colour Selection** — the MX-7001N/MX-6201N automatically detect colour and black & white pages from multi-page originals, selects the appropriate mode for each page and then outputs the copy to match the original
- **Scan Once/Print Many, electronic sorting and offset stacking**<sup>\*2</sup> for highly productive copying
- **Large paper supply** of up to 6,600 sheets, including **3,500-sheet A4 large capacity tray**
- **Optional 3,000-sheet A3 wide large capacity tray**
- **High-yield twin black toner cartridges** readily handle continuous large-volume jobs. If a black toner cartridge runs out in the middle of a job, it can be replaced easily without stopping the machine
- **Job Build function** — large-volume jobs can be scanned in batches and stored for output as a single job<sup>\*3</sup>
- **Image editing functions** — multi-shot (4-in-1, 2-in-1), multi-page enlargement, image repeat, mirror image and more

\*1: Some restrictions apply when combining paper sizes of different format series

\*2: Requires optional finisher or saddle stitch finisher

\*3: The number of pages that can be stored for the Job Build function depends on the machine's HDD capacity and other conditions

### New toner/developer combination for superior quality

Thanks to a combination of Mycrostoner - Sharp's advanced small particle toner - and a brand new developer, the MX-7001N/MX-6201N delivers our best quality ever. Fine details are clearly reproduced, halftones and colour gradients are smoother than ever and text is crisp, clear and precise.

### Special Applications

- **Proof copy function** — check a trial set and make any necessary copy adjustments before outputting the entire volume
- **Colour stamp function** — choose from four categories: date, page number, text or stamps such as "URGENT." Each category can be assigned one colour from a choice of seven colours
- **Tab copy** — copy directly onto tabs on document separators and insert them into assigned positions

SCAN

FAX

# EFFORTLESS COLOUR **SCANNING** AND **DISTRIBUTION**

The MX-7001N/MX-6201N's network scanning and fax options make document distribution easy. Convert paper-based documents into digital editable files. Documents can be easily and quickly distributed by scanning directly to a server location, attached to an e-mail message or sent directly to your PC desktop. Take advantage of fast 33.6 Kbps transmission speeds and electronic faxing by adding the optional fax expansion kits.



Basic image send screen



QWERTY keyboard for LDAP and others

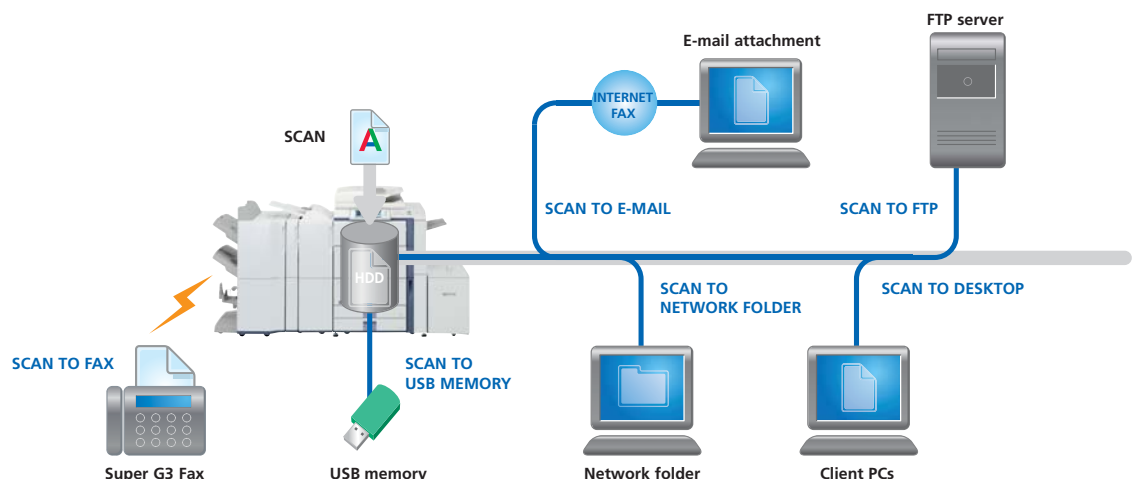
Note: Faxing is available only in black & white

## at a glance...

- **Full-colour scanning** to your PC desktop, e-mail, FTP server, network folder (SMB) or USB memory
- **Various scanned file formats** — TIFF, PDF, encrypted PDF, JPEG (colour only)
- **Easy text entry** — preset frequently used e-mail subject titles or messages for easy one-touch entry or directly enter text from the LCD control panel
- **Lightweight Directory Access Protocol (LDAP)** allows easy browsing and storing of e-mail addresses for rapid distribution of scanned documents, as well as automatic synchronisation with your primary e-mail server
- **Paperless faxing with inbound routing** lets you check incoming faxes via e-mail and print only what you need
- **Duplex faxing** — scan and send both pages of two-sided documents and print incoming faxes onto both sides of paper
- **Automated fax finishing** — set the MX-7001N/MX-6201N's to automatically copy and staple incoming faxes\*
- **Internet fax** — send and receive faxes over the Internet with other ITU-T T-37 compliant machines without worrying about costs
- **PC-Fax/PC-Internet Fax** — send data directly from a PC to a fax machine without printing to paper

Note: Faxing requires optional MX-FXX1 and Internet faxing requires optional MX-FWX1

\* Requires optional finisher or saddle stitch finisher



## STREAMLINED DOCUMENT MANAGEMENT

The MX-7001N/MX-6201N's integrated Document Filing function facilitates document management and makes document retrieval easy. Store documents directly on the MX-7001N/MX-6201N's hard disk to protect data and save valuable office space.



Document Filing key

### Quick Filing with Temporary Storage

Save up to 1,400 pages or 1,000 files\*<sup>1</sup> of processed copy, print, scan and fax\*<sup>2</sup> job data in Quick File Folders on the hard disk for later use, eliminating the need to recreate jobs.

### Advanced Filing for Long-Term Storage

Save job data on the hard disk in up to 500 folders with customised names and locations and with enhanced security features to protect your sensitive data. The MX-7001N/MX-6201N store up to 4,200 pages or 3,000 files\*<sup>1</sup>. Storage options include:

- Main Folder — stores files in a central location for convenient workgroup sharing
- Custom Folder — stores confidential files in private folders with password security

\*1: Measured using Sharp's standard chart (A4 with 6% coverage, black & white). The Quick File Folder shares the HDD with the Job Build function; up to 10GB of data storage is available when using both functions. The storage capacity will be less for colour pages.

\*2: For fax and Internet fax jobs, only transmitted data (not received faxes) can be saved in the Document Filing function



Search results



Web access screen



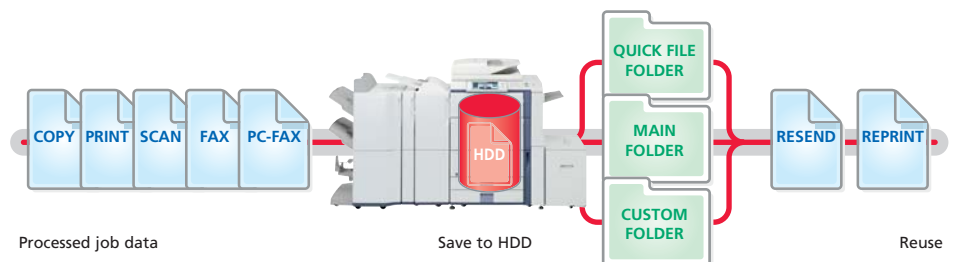
Document Filing settings

### Easy Access

Conveniently access documents stored on the hard disk from the control panel display or through a Web browser.

### Secure Storage

With the optional Data Security Kit installed, all data that goes through the MX-7001N/MX-6201N's hard disk is encrypted, enabling you to protect confidential data and documents from unauthorised access.



Processed job data

Save to HDD

Reuse





# SOFTWARE UTILITIES FOR INCREASED PRODUCTIVITY



Search screen

\* Image Compression Tool for converting images into high-compression PDF files.

## Easy Document Management with Sharpdesk™

Sharp's original document management software, Sharpdesk™, lets you manage documents in over 200 file formats in a single application right on your PC desktop, making it possible to integrate scanned paper-based documents and files created in popular applications such as Word. It allows you to organise, edit, search and distribute your documents, all with simple drag-and-drop operation. Features include:

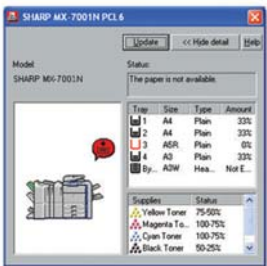
- Intuitive desktop display features **thumbnail** viewing
- Sharpdesk Imaging provides **annotation** tools for paper-free proofreading
- Sharpdesk **Composer** combines different types of files into a single document
- **Optical character recognition** converts documents into editable text files
- **Output zone** distributes files to e-mail, printers and other applications
- **File search** allows searching by file name, keyword or thumbnail



Web-based PAU 4.0

## Advanced Device and Job Management

- System set-up is accessible via a standard Web browser, enabling administrators to effortlessly configure system settings, including user control and security.
- **Printer Administration Utility** makes printer networks easier to manage by allowing administrators to customise monitored items and view settings, such as the IP address, directly from their PC through a Web browser.
- When the MX-7001N/MX-6201N is low on paper or toner, **Printer Status Monitor** will alert you in the form of easy-to-understand graphics, allowing you to avoid problems before they arise.
- The **Job Status screen** on the control panel displays a list of all copy/print jobs, showing you at a glance the jobs in progress and the position of your job in the queue.



Printer Status Monitor

## Sharp OSA® (Open Systems Architecture)

The MX-7001N/MX-6201N has an open systems architecture that allows third-party software developers to create custom applications that link the MFP to software programmes on a server or PC. Sharp OSA gives you direct access to business applications right from the LCD panel, offering a new realm of control and convenience.

Sharp OSA has three soft key modules, each of which extends the functionality of the MFP:

- **Application Integration Module (MX-AMX1)** lets users add data to scanned documents before sending them directly to applications for processing or archiving
- **Application Communication Module (MX-AMX2)** lets remote applications create, configure, and execute scanning and printing jobs on the MFP
- **External Account Module (MX-AMX3)** tracks usage by individuals and workgroups and restricts usage according to individual access rights

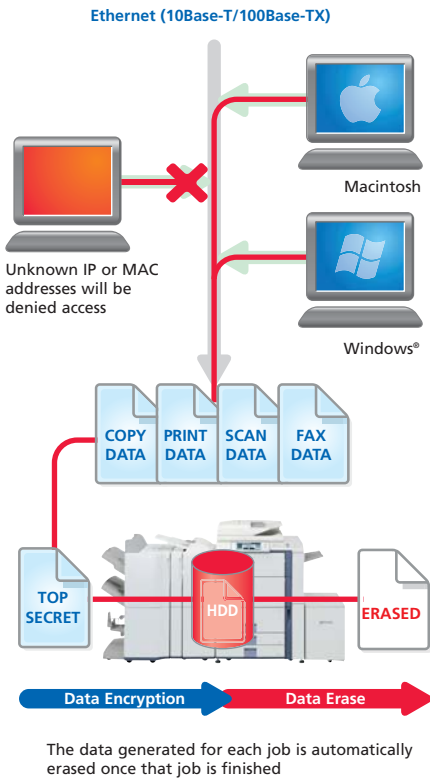


Job Status screen

PRINT

COPY

# SOLID, STATE-OF-THE-ART SECURITY



Industry-leading security solutions from Sharp protect your business with multiple levels of data and network security that cover a broad spectrum of security needs. The advanced security functions of the MX-7001N/MX-6201N give added reassurance by offering powerful protection of critical data and preventing unauthorised access.

## at a glance...

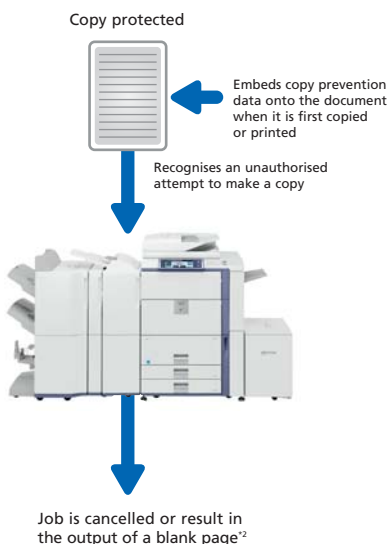
- **Data Security Kit<sup>1</sup>** encrypts and erases any data on the hard disk and internal memory safely and completely after use
- **Document Control function<sup>2</sup>** prevents unauthorised copying, scanning, faxing and filing
- **Encrypted PDF with password protection** prevents unauthorised viewing of confidential image data
- **IP/MAC address filtering** prevents direct connection and access by unauthorised users
- **Confidential data storage and printing** protects sensitive information by requiring the user to enter a PIN code before the documents are produced
- **Secure Sockets Layer (SSL)** encrypts data communications to prevent data leakage through the network
- **User authentication** requires logging into the machine with passwords for machine access
- **Secure data storage for Document Filing<sup>3</sup>** — all data that goes through the hard disk is encrypted, while passwords used in the Advanced Filing function ensure solid security
- **IPv6 and IPsec compatibility** ensures an even higher level of network security

\*1: Optional

\*2: Requires optional Data Security Kit. May not work for certain types of documents and paper

\*3: Requires optional Data Security Kit

## Document Control Function



## Document Control Function

Document Control<sup>1</sup> prevents unauthorised copying, scanning, faxing and filing of confidential documents. The MX-7001N/MX-6201N embeds copy prevention data onto a document when it is first copied or printed. It will then detect this data if someone tries to make a copy of the document. Any unauthorised attempts to copy a Document Controlled-document will simply be cancelled or result in the output of a blank page<sup>2</sup>. The MX-7001N/MX-6201N will also generate an e-mail alert to notify the administrator.

\*1: Requires optional Data Security Kit. May not work for certain types of documents and paper.

\*2: May result in the output of a blank page if paper has already been fed for the job before the MX-7001N/MX-6201N detect copy prevention data.

## Data Security Kit

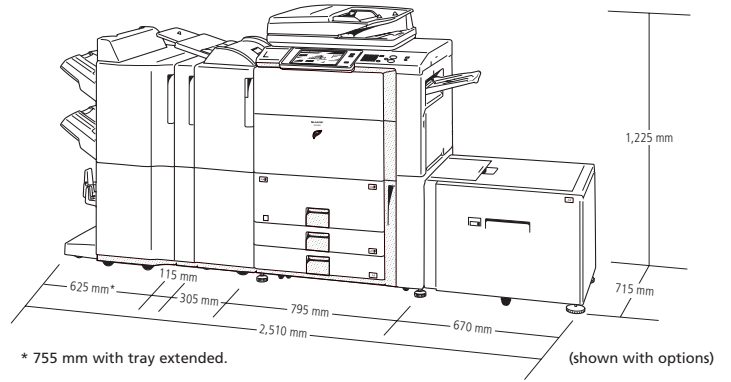
Digital copier/printers or multifunction products can retain hundreds of pages of confidential information from previous jobs on their hard disks or internal memory. To safeguard this information from unauthorised access, the optional Data Security Kit automatically encrypts and erases the data after each job is complete as well as data stored both on the hard disk and in the address book.

SCAN

FAX

FILE

## OPTIONS



### 1. MX-FNX3



### 2. MX-FNX4



### 3. MX-PNX2A/C/D



### 4. MX-CFX1



### 5. MX-RBX2



### 6. MX-FXX1



### 7. MX-LCX2



### 8. MX-LCX3N



Note: The MX-FNX4 can be connected directly to the MX-RBX2 or MX-CFX1, and the MX-FNX3 to the MX-RBX2, but the MX-FNX3 requires a punch module when used with the MX-CFX1.

### Finishing

#### 1. MX-FNX3 Finisher<sup>1</sup>

A3 to B5 (offset/staple), A3W to A5R<sup>2</sup> (non offset)  
Upper tray: max. 1,550-sheet paper capacity<sup>3</sup>  
Lower tray: max. 2,450-sheet paper capacity<sup>3</sup>  
Stapling capacity: max. 50-sheet multi-position staple<sup>3</sup>  
Staple position: 3 locations (front, rear or both)

#### 2. MX-FNX4 Saddle Stitch Finisher

A3 to B5 (offset/staple), A3W to A5R<sup>2</sup> (non offset)  
Upper tray: max. 1,550-sheet paper capacity<sup>3</sup>  
Lower tray: max. 2,450-sheet paper capacity<sup>3</sup>  
Stapling capacity: max. 50-sheet multi-position staple<sup>3</sup>  
Staple position: 3 locations (front, rear or both)  
Saddle stitch tray (lower): 10 sets (11–15 sheets),  
20 sets (6–10 sheets), 25 sets (1–5 sheets)

#### 3. MX-PNX2A 2-Hole Punch Unit

#### MX-PNX2C 4-Hole Punch Unit

#### MX-PNX2D 4-Hole Wide Punch Unit

#### 4. MX-CFX1 Inserter

A3W to A5R<sup>2</sup>; 55–256 gsm, 100 sheets (80 gsm)

#### 5. MX-RBX2 Paper Pass Unit

\*1: Requires punch module when using with MX-CFX1

\*2: Except A5

\*3: A4 or smaller, 80 gsm

### Base Unit

#### 7. MX-LCX2 3,500-Sheet Large Capacity Tray

A4 or B5, 3,500 sheets (80 gsm)

#### 8. MX-LCX3N 3,000-Sheet Large Capacity Tray

A3W to B5, 3,000 sheets (80 gsm)

### Connectivity Board

#### Printing

**MX-PKX1** PS3 Expansion Kit

Enables PostScript printing

**MX-PEX2** Fiery Print Controller\*

**AR-PF1** Barcode Font Kit

#### Faxing

**MX-FXX1** Fax Expansion Kit

Super G3 fax module

**MX-FWX1** Internet Fax Expansion Kit

#### Sharpdesk™ licenses:

**MX-USX1** x 1 user

**MX-USX5** x 5 users

**MX-US10** x 10 users

**MX-US50** x 50 users

**MX-USA0** x 100 users

#### Security

**MX-FRX9U** Data Security Kit (commercial version)

**MX-FRX9** Data Security Kit (Common Criteria version)\*

Enables data encryption and erasure

#### Sharp OSA®

**MX-AMX1** Application Integration Module\*

**MX-AMX2** Application Communication Module\*

**MX-AMX3** External Account Module\*

Enables machine customisation by third-party software developers

\*Available at a later date

Some options may not be available in some areas.

# SPECIFICATIONS

## MX-7001N/MX-6201N

Digital Full Colour Multifunctional Systems



General	
Type	Console
Technology	Laser
Engine speed (max.) <sup>*1</sup>	A4, portrait A3
MX-7001N	Colour: 50 cpm/ppm 24 cpm/ppm Black & white: 70 cpm/ppm 38 cpm/ppm
MX-6201N	Colour: 50 cpm/ppm 24 cpm/ppm Black & white: 62 cpm/ppm 33 cpm/ppm
Paper size	Max. A3 wide, min. A5R
Paper weight	60 – 209 gsm (bypass: 55 – 256 gsm)
Paper capacity	Standard: 3,100 sheets (1,200-sheet tray, 800-sheet tray, 2 x 500-sheet tray and 100-sheet multi-bypass tray) Maximum: 6,600 sheets (3,500-sheet LCC, 1,200-sheet tray, 800-sheet tray, 2 x 500-sheet tray and 100-sheet multi-bypass tray)
Warm-up time	Less than 320 sec (220 to 240V) <sup>*2</sup>
Memory	[Copier memory] Standard 1280MB [Printer memory] Standard 1 GB [HDD] 80GB HDD <sup>*3</sup>
Power requirements	Rated local AC voltage ±10%, 50/60 Hz
Power consumption (max.)	1.84 kW (200 to 240V)
Dimensions (W x D x H)	795 x 715 x 1,225 mm
Weight	approx. 209 kg
Features	Card shot, edge/centre erase, job build, document filing, document control, toner save mode

Copier	
Original paper size	Max. A3
First copy time <sup>**</sup>	Full colour: 7.2 sec. Black & white: 4.0 sec. (MX-7001N), 4.5 sec (MX-6201N)
Continuous copy	Max. 999 copies
Resolution	Scan: 600 x 600 dpi, 600 x 300 dpi Print: 600 x 600 dpi
Gradation	Equivalent to 256 levels
Zoom range	25 to 400% (25 to 200% using DSPF) in 1% increments
Preset copy ratios	10 ratios (5R/5E)
Features <sup>**</sup>	Auto paper selection (mixed/random size feeding), auto magnification selection, paper type selection, auto tray switching, rotation copy, electronic sorting, network tandem copy, book copy, margin shift, dual page copy, multi-shot (4-in-1, 2-in-1), cover/transparency/tab page insertion, pamphlet copy, 2-sided copy orientation change, XY zoom, black & white reverse, mirror image, duplex copy, toner save mode, reserved copy, job programme, image repeat, irregular original/paper size input, stamps (date, page number, text, stamp), multi-page enlargement, tab copy, centering, proof copy, document control, auto colour selection, enhanced Sharp auto colour mode, auto calibration

Network Scanner	
Scan method	Push scan (via operation panel) Pull scan (with TWAIN-supporting application)
Resolution	Push scan: 100, 200, 300, 400, 600 dpi Pull scan: 75, 100, 150, 200, 300, 400, 600 dpi 50 to 9,600 dpi
File formats	TIFF, PDF, encrypted PDF, JPEG (colour only)
Scanner utilities	Sharpdesk™
Scan destinations	Scan to e-mail, desktop, FTP server, network folder, USB memory

Document Filing	
Document filing capacity	Main and custom folders: 30GB, 4,200 pages <sup>*7</sup> or 3,000 files Quick file folder: 10GB, 1,400 pages <sup>*7</sup> or 1,000 files
Stored jobs	Copy, print, scan, fax transmission <sup>*8</sup>
Storage folders	Quick file folder, main folder, custom folder (max. 500 folders)
Confidential storage	Password protection

Network Printer	
Resolution	600 x 600 dpi
Enhanced resolution	600 x 1,200 dpi for black & white printing with PS Expansion Kit
Interface	USB 1.1 (Windows® 98/Me/2000/XP, Windows Server™ 2003) USB 2.0 high-speed (Windows® 2000/XP, Vista) 10Base-T/100Base-TX
Supported OS <sup>**9</sup>	Windows® 98/Me/2000/XP, Windows Vista, Windows Server™ 2003, Mac OS 9.0 to 9.2.2, Mac OS X 10.1.5, 10.2.8, 10.3.3 to 10.3.9, 10.4
Network protocols <sup>**9</sup>	TCP/IP (IPv4, IPv6), IPX/SPX (NetWare), NetBEUI, EtherTalk (AppleTalk)
Printing protocols	LPR, Raw TCP (port 9100), POP3 (e-mail printing), HTTP, Novell Printserver application with NDS and Bindery, FTP for downloading print files, EtherTalk printing, IPP
PDL emulation	Standard: PCL 6/5c Option <sup>†</sup> : PS3 emulation
Available fonts	80 fonts for PCL, 136 fonts for PS3 emulation <sup>††</sup>
Features <sup>**5 *11</sup>	Network tandem print, RIP Once/Print Many, job retention (print hold, proof print, confidential print), direct PDF/TIFF/JPEG printing, carbon copy print, duplex print, printer administration utility and status monitor, IP/MAC address filtering and port/protocol management, font and form download, pamphlet style, binding edge, N-up (2/4/6/8/9/16), paper/output tray selection, cover insertion, transparency interleave, fit to page, watermarks, offset output, form overlay, auto configuration, barcode font compatibility, tab print, poster print, document control, secure network communications (SSL and IPsec (LPD))

Black & White Facsimile (optional MX-FXX1 required)	
Compression method	MH/MR/MMR/JBIG
Communication protocol	Super G3/G3
Transmission time	Less than 3 seconds <sup>**12</sup>
Modem speed	33,600 bps to 2,400 bps with automatic fallback
Transmission resolution	Standard: 203.2 x 97.8 dpi Super Fine: 406.4 x 391 dpi
Recording width	A3 to A5
Memory	8MB flash memory
Grey scale levels	Equivalent to 256 levels
Features	Duplex transmission/reception, quick on-line transmission, error correction mode, F-Code compatibility (confidential, relay broadcast), LDAP support, 999 one-touch dials, 500 group dials, 48 job programmes, broadcasting number registration, polling, memory transmission/reception, auto reduction (transmission/reception), rotation transmission/reception, print actual size, 2-in-1 transmission, long original transmission (max. 800 mm), PC-Fax transmission <sup>††</sup> , timer transmission, paperless faxing with inbound routing to e-mail, activity report, anti-junk fax, dual page scan, mixed size original scanning

**Options**  
Please refer to the Options section on the previous page.

<sup>\*1</sup>: Copy mode: When copying same document continuously on portrait A4 plain paper in non-offset mode. Print mode: When printing same document continuously on portrait A4 plain paper in non-offset mode, excluding processing time. <sup>\*2</sup>: At rated voltage, 23°C. <sup>\*3</sup>: 1GB = One billion bytes when referring to hard drive capacity. Actual formatted capacity is less. <sup>\*4</sup>: Portrait feeding of A4 sheets from main unit's 2nd paper tray (right-hand tandem tray), using document glass, without Auto Colour Selection and Auto Colour mode, polygon in rotation. <sup>\*5</sup>: Some features require option(s). <sup>\*6</sup>: Optional MX-FWX1 required. Max. resolution 400 dpi. <sup>\*7</sup>: Measured using Sharp's standard chart (A4 with 6% coverage, black & white). The Quick File Folder shares the HDD with the Job Build function; up to 10GB of data storage is available when using both functions. The storage capacity will be less for colour pages. <sup>\*8</sup>: Optional MX-FXX1 required. <sup>\*9</sup>: Optional MX-PKX1 required for Mac OS and EtherTalk. <sup>\*10</sup>: Optional MX-PKX1 required. <sup>\*11</sup>: Some features are not available according to the printer driver used. <sup>\*12</sup>: Based on Sharp's standard chart with approx. 700 characters (A4 portrait) at standard resolution in Super G3 mode, 33,600 bps, JBIG compression. <sup>\*13</sup>: For Windows environments only.



Design and specifications are subject to change without prior notice. All information was correct at time of print. The ENERGY STAR logo is a certification mark and may only be used to certify specific products that have been determined to meet the ENERGY STAR programme requirements. ENERGY STAR is a US registered mark. The ENERGY STAR guidelines apply to products only in the US, Europe, Australia, New Zealand and Japan. Windows, Windows Server and Windows Vista are registered trademarks of Microsoft Corporation. Fiery is a trademark of Electronics for Imaging, Inc. All other company names, product names and logotypes are trademarks or registered trademarks of their respective owners. ©Sharp Corporation 2007 Ref: BR-MX-7001N/MX-6201N. All trademarks acknowledged. E&OE.